

SHARP®

100th
ANNIVERSARY

HIGH-SPEED COLOR DOCUMENT SYSTEMS ●●●●●



MX-6240N MX-7040N

Sharp High-Speed Color Document Systems are designed to meet the growing needs of high volume business environments.

BREAKTHROUGH PERFORMANCE WITH UNMATCHED VERSATILITY

versatility

Unleash the potential of Sharp's advanced technology with the new MX-6240N and MX-7040N High-Speed Color Document Systems. The MX-6240N and MX-7040N combine a flexible, modular design with robust paper handling and productive output capabilities that can streamline your document workflow like never before. Built for high-volume office environments, small CRDs and copy rooms, the MX-6240N and MX-7040N are a perfect fit where productivity and reliability are essential.

A large 10.1" (diagonally measured) high-resolution, touch-screen display offers real-time scan preview with intuitive flick-and-tap editing to help ensure your documents are produced accurately and without waste. With Sharp's next-generation micro-fine toner technology combined with 1200 x 1200 dpi print resolution and true Adobe® PostScript®, your business can produce professional looking color documents in-house with breathtaking image quality that is also economical. Sharp's Color Consistency System helps ensure brilliant, high-quality color output page after page. A new paper feed option utilizes air-feed technology, which offers higher reliability and enhanced media capabilities.

Built on the latest Sharp OSA® development platform, the MX-6240N and MX-7040N make integration with network applications and cloud services easier than ever. Sharp's industry-leading security platform incorporates standard 256-bit data encryption and overwrite protection to safeguard your business's intellectual property. And when it comes time to trade in, a convenient End-of-Lease feature can erase all job data and user data.



PRECISION ENGINEERED FOR HIGH PRODUCTIVITY



POWERFUL

MULTI-FUNCTION

MULTI-TASKING

INTUITIVE

FLEXIBLE

Innovative features plus multi-function capability allow you to meet tomorrow's document needs today.

- Flexible modular design provides a **wide variety of configurations** from basic high-speed copying and printing to **professional folding** and **booklet making**
- **Scan preview** feature offers on-the-fly page editing with easy finger-tip navigation
- 150-sheet **Duplex Single Pass Feeder (DSPF)** scans documents at up to 150 images per minute
- New **triple air-feed** paper handling option offers **high reliability** and is virtually maintenance free
- Up to **8500-sheet paper capacity** supports media up to **110 lb. cover stock (300 gsm)**
- Sharp's **Color Consistency System** delivers high-quality color output and maintains optimum color balance and toner density page after page
- Standard PCL®6 and **true Adobe® PostScript®3™** with available Windows® XPS printing systems
- **Large 10.1"** (diagonally measured) high-resolution **color touch-screen display** with tilt viewing

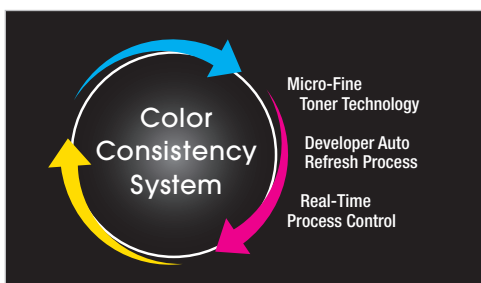


- True **1200 x 1200 dpi** printing with 8-bit processing provides beautiful images and enhanced clarity for fine details such as small text and graphics
- Standard **Job Management** makes it easy to print on-demand with the ability to retain jobs, combine jobs, repaginate jobs, edit pages within jobs and more
- Integrated **web browser** provides easy website navigation for quick access to information and convenient printing
- Supports the latest **Sharp OSA® development platform**, enabling businesses to easily integrate with network applications and cloud services
- **Energy efficient** belt fusing offers **low power consumption**, fast warm up time, enhanced print quality and greater media capabilities
- **Auto power management** function can turn on and turn off the machine based on usage trends
- Supports Sharp's award-winning security platform with standard **256-bit data encryption** and up to 7 times **data overwrite protection**
- Convenient **End-of-Lease feature** can erase all files on the hard disk drive, all user data, job status data and address book data at trade-in time

INTELLIGENT FEATURES HELP STREAMLINE YOUR WORKFLOW



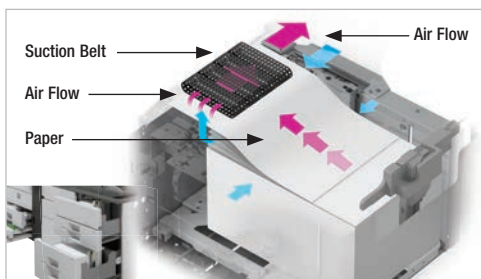
Intuitive menu screens enable you to easily edit documents in scan preview mode.



Sharp's Color Consistency System is a synergy of processes that helps ensure color output always looks brilliant and sharp.



On-the-fly toner cartridge replacement while your job is running helps maximize your productivity.



Triple air-feed LCT paper trays maximize reliability and minimize downtime. Pneumatic sensors maintain consistent air flow.

Advanced technology that will exceed your expectations.

A Smart Touch-Screen Helps You Get Your Work Done Fast

The new MX-6240N/7040N High-Speed Color Document Systems feature a 10.1" (diagonally measured) high-resolution LCD that goes beyond basic touch-screen menu navigation. With advanced features that include flick, tap, and slide, you can quickly access powerful functions. With scan preview, you can easily view and edit your job. A tilting display panel provides enhanced accessibility. A built-in retractable keyboard makes data entry quick and easy.

A High-Speed Document System That Is Also High Performance

The new MX-6240N/7040N utilize a powerful multi-processor controller designed to quickly execute complex copy, print and scan jobs, even in busy office environments. Plus, with print speeds of 62 ppm and 70 ppm, the MX-6240N/7040N can help raise your productivity to new levels. With true 1200 x 1200 dpi print resolution with 8-bit processing, your business can produce professional looking documents with greater efficiency.

High Quality Image Output That You Expect

The new MX-6240N/7040N utilize an innovative **Color Consistency System**, which is a synergy of image processes that helps ensure color output always looks as brilliant and sharp as the day the machine was installed.

- Sharp's next generation **Micro-fine Toner Technology** ensures optimum color balance and edge definition, while maximizing toner yield and minimizing waste.
- The **Developer Auto-Refresh Process** mixes a small amount of carrier with toner. As toner is replenished into the developing unit, so is some carrier, extending developer life between maintenance cycles, resulting in less downtime.
- **Real-Time Process Control** monitors each of the primary colors (cyan, magenta, yellow and black) and automatically makes adjustments to ensure optimum color output and density. This process helps maintain beautiful, high quality image output throughout each print job.



Developer Auto-Refresh Process

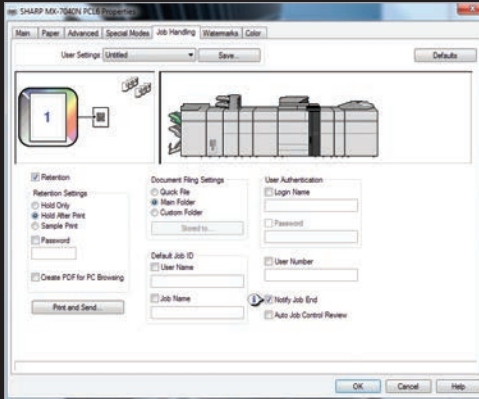
Robust Paper Handling For Busy High-Volume Environments

Sharp understands the importance of productivity, that's why the new MX-6240N/7040N High-Speed Color Document Systems offer up to **8500-sheet paper capacity** and support **media types up to 110 lb. cover (300 gsm)**. Sharp's new paper feed option uses **air-feed technology**, which maximizes reliability and minimizes down time. A feature typically found on production devices and printing presses, the triple air-feed system directs air flow with precision accuracy to ensure proper paper handling. A standard 150-sheet dual head document feeder can scan up to 150 images per minute.



Up to 8500-sheet paper capacity with options.

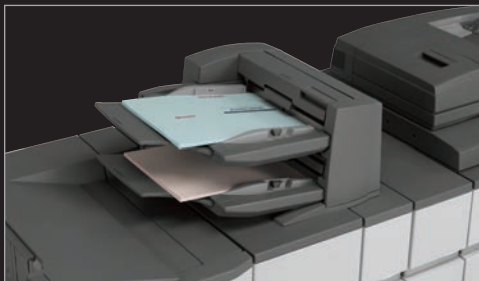
OUTSTANDING OUTPUT AND FLEXIBLE DOCUMENT DISTRIBUTION



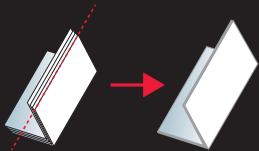
Job handling features enable you to retain print jobs on the hard drive for reprinting.



Sharp's Document Filing System with thumbnail preview makes it easy to locate and retrieve stored jobs.



MX-CF11 Two-tray inserter can insert covers up to 110 lb. Bristol (220 gsm).



MX-TM10 Trimmer Unit option can cut the folded open edge for a smooth, straight, finished look.

Powerful multi-tasking controller delivers true 1200 x 1200 dpi with 8-bit processing.

Exceptional Print Quality with Professional Output

With the MX-6240N/7040N High-Speed Color Document Systems, your business can produce brilliant, high-quality color documents, as well B&W documents with crisp razor-sharp graphics. With true **1200 x 1200 dpi resolution**, even documents with fine detail will look great! **Standard true Adobe PostScript** drivers deliver extensive color control options, so you can manage color output right from your desktop. With Sharp's **advanced job retention** features, jobs can be stored on the hard drive to be reprinted again and again by walk-up users right from the control panel.

Integrated Network Scanning

With Sharp's powerful **ImageSEND™** technology, you get one-touch distribution features that centralize document workflow, help reduce mail costs and help save time. With up to **seven destinations** – E-mail, Desktop, FTP, Network Folders (SMB), USB, Fax and Internet Fax – getting your documents where they need to go is as easy as pushing a button. With **Sharpdesk®** personal document management software, users can easily organize their scanned documents and integrate them into everyday workflow.



Sharp's Integrated Network Scanning

Innovative Job Management

Sharp's **Document Filing System** provides a 1 TB hard disk drive to store frequently used files. With the thumbnail preview mode, stored jobs can be located and retrieved quickly. Easily reprint retained jobs, combine jobs, repaginate jobs, edit pages and more. For environments with critical documents, a redundant back-up hard drive is available.

Advanced Finishing Adds the Final Touch

The MX-6240N/7040N offers a wide range of high performance finishing options that can **give your documents a professional look** and feel.

- The MX-FN19 4000-sheet stacking finisher with 50-sheet stapling capacity speeds through large projects, giving you complete control over deadlines. Need robust booklet making? Choose the MX-FN22 4000-sheet **saddle stitch finisher** with **100-sheet stapling capacity**, which can produce up to **80-page saddle-stitched booklets**.
- The MX-CF11 **two-tray inserter** option enables you to insert covers and pre-printed documents into your job for producing professional booklets and other complex documents. With supported paper weights of up to 110 lb. Bristol (220 gsm), the inserter option can give your documents the finishing touch.
- To give your booklets a professional finished edge, the MX-TM10 **trimmer unit** option can cut the folded open edge of your documents for a smooth, straight, finished look.
- The MX-FD10 **multi-folding unit** option provides a variety of folds, including Z-fold, C-fold, Accordion-fold, Double-fold and Half-fold — your documents will look so good, everyone will think you have your jobs sent out to a printer.

MX-FN22 saddle stitch finisher



Z-fold



C-fold



Accordion-fold



Double-fold



Half-fold

INTUITIVE USER INTERFACE ON 10.1-INCH COLOR LCD



Sharp's 5-level tilt screen allows for adjustment to a convenient viewing position.

Navigates You Smoothly Through Advanced MFP Functions

Sharp's new high-resolution touch-screen display offers the customization and ease-of-use your business needs to elevate your office productivity to the next level. With the ability to change background screens, the layout and naming of the function keys, language display setting and more, you can quickly set up a custom user interface that meets the needs of your office. Whether your requirements are simple or complex, the MX-6240N/7040N High-Speed Color Document Systems can help you get the job done fast!

For a College Campus Office: Set up a simple screen for walk-up teachers and administrators to retrieve courseware or initiate large print runs with ease.

Change the Theme: Easily change the menu colors and icon layout to suit the preferences of users in your office.



Change the Language: Walk-up users can easily choose from 24 different display languages with just a few key strokes.



CONFIGURATIONS TO SUIT VIRTUALLY ANY ENVIRONMENT

Versatile and Customizable To Fit Your Needs

The MX-6240N and MX-7040N High-Speed Color Document Systems offer flexible paper handling and finishing options to accommodate everything from basic multi-function office use to advanced document output for small CRD environments and copy rooms



MX-7040N shown with Three-hole Punch Unit, 50-sheet Staple/Saddle Stitch Finisher, 3500-sheet letter-size LCC, 100-sheet multi-bypass and right side exit tray.



MX-7040N shown in full configuration with Curl Correction Unit, Inserter, Multi-Folding Unit, 100-sheet Staple/Saddle Stitch Finisher, 5000-sheet ledger-size LCT and 500-sheet multi-bypass.

Modular Options Make It Easy To Build the System of Your Choice

Options for the MX-6240N and MX-7040N enable businesses to choose from four high performance finishers that offer up to 100-sheet stapling, 80-page saddle stitch booklet making and available three-hole punching. More advanced configurations include a two-tray inserter, multi-folding unit and trimmer unit.

Flexibility



¹For 50-sheet Staple Finishers.

²For 100-sheet Staple Finishers.



GET MORE OUT OF NETWORK RESOURCES



Sharp OSA® technology at a glance

- Automate tasks and save time with seamless integration with network applications and cloud-enabled services.
- Virtually eliminates repetitive tasks and streamlines workflow, increasing efficiency.
- Maximize your return on investment with tighter integration among IT assets.
- Industry-standard programming leads to faster deployment of new solutions.



Sharp OSA technology allows businesses to leverage the power of their network applications, back-end systems, even cloud-enabled services.

Streamline your document workflow and enhance your productivity with Sharp OSA® technology.

Integrating With Network Applications And Cloud Services Has Never Been So Easy

The MX-6240N/7040N High-Speed Color Document Systems offers **powerful document workflow capabilities** to help businesses leverage their network infrastructure, cloud-enabled services and more! While others are limited to a small circle of productivity, the Sharp OSA development platform allows businesses to leverage the power of their network applications, back-end systems, even cloud-enabled services, right from the touch-screen panel of the MX-6240N/7040N High-Speed Color Document Systems.

Save Time, Increase Efficiency

You'll save time and increase the efficiency of everyday tasks with Sharp OSA technology because it can be virtually seamless to the user. Any MX-6240N/7040N anywhere in the organization can display choices that were once only available on a desktop PC. With **one-touch access** to business applications via Sharp OSA integration, you can start and finish a document distribution task without worry.

Customized Integration

Sharp OSA technology also provides **powerful customization**. With the ability to personalize applications to deliver document processes tailored to your business, Sharp OSA technology can reduce redundancy and **streamline workflow**, helping to save time and **optimize productivity**. The latest version of Sharp OSA technology can reach beyond the firewall, connecting with cloud-based applications over the Internet. And since Sharp OSA technology utilizes industry-standard network protocols and Web API's, third-party software developers can deliver customized solutions to your business faster than ever.

The Convenience You Want With The Security You Need

The MX-6240N/7040N combined with the Sharp OSA development platform is the logical choice for providing fast, **flexible access to documents and applications**...no matter where you are in the office. You also get the controlled access and tracking ability you require with tighter integration capabilities for network security and accounting applications.



ADVANCED DEVICE MANAGEMENT TOOLS MAXIMIZE EFFICIENCY



Sharp Remote Device Manager

The MX-6240N/7040N High-Speed Color Document Systems enhance operational efficiency through versatile device management capabilities.

Sharp Remote Device Manager (SRDM)

Make management of your MX-6240N/7040N simple and straightforward with Sharp Remote Device Manager (SRDM).^{*} This easy-to-use software allows you to take control of the versatile system features and simplifies installation and management.

- With Sharp Remote Device Manager, administrators can easily manage the setup, configuration, device settings, cloning and more! Advanced features such as **Remote Front Panel** allow administrators and support personnel to view and control the LCD panel of the machine remotely from virtually any PC on the network!
- Event-driven, real-time service alerts, administrators and supervisors can achieve higher productivity. Now it is easier than ever to view service logs, click counts, history reports and more.

With **Printer Status Monitor**, network users can view printer conditions, check paper levels, toner, and more, all through an easy-to-use interface.



Remote Front Panel

Take Charge of Color Usage and Costs

With Sharp's device management system, administrators and supervisors can **define user groups** on the MX-6240N/7040N to manage and restrict features, such as color copying, scanning or printing. Easily set up a custom user group to manage page counts (copy, print, scan or fax operations) for both color and B&W. This helps to simplify cost management of color imaging. The MX-6240N/7040N can store profiles for up to 1000 users.

Integrated Web Browser Application

The MX-6240N/7040N provides a standard integrated **web browser** application right at the panel of the machine, enabling easy website access, navigation and printing.



Integrated web browser application enables easy website access.

24/7 On-Line Training With My Sharp™

Managing all of the advanced features of your Sharp product is simple and easy. Ask your Authorized Sharp Dealer about the **My Sharp** website. This dedicated customer training website is customized to your MX-6240N/7040N and allows you to locate resources and find information specific to your configuration, truly helping you maximize your investment.



SHARP

^{*}Some features not available at time of launch.

HEIGHTENED SECURITY SAFEGUARDS YOUR INTELLECTUAL PROPERTY

PRIVACY

AUTHORIZATION

CONFIDENTIALITY

PROTECTION



Sharp's Standard Key Security Features at a Glance

- 256-Bit Data Encryption
- Up to 7 times Data Overwrite Protection
- Group Account Management for up to 1000 Users
- Confidential Printing
- Port Management
- IP/MAC Address Filtering

Innovative document and device protection helps ensure confidentiality.

To help protect your data, the MX-6240N/7040N offers several layers of **Standard Security**, making Sharp the optimum choice to help protect employees' privacy and intellectual property. As a leader in office equipment security, Sharp makes it easy for virtually any business or government entity to safely deploy digital copying, printing, scanning and faxing.



Authority Groups

Advanced **Account Management** enables administrators to set authority groups for access to features of the MX-6240N/7040N. Administrators can control which department, for instance, has full access to copying, printing, scanning and/or fax. Walk-up users enter a code, Local Name and Password, or LDAP User Authentication to access the features assigned to their group.



Data Encryption and Overwrite

To help protect your data, the MX-6240N/7040N can encrypt document data using AES (Advanced Encryption Standard) **256-bit encryption**. The MX-6240N/7040N can also erase the temporary memory on the hard drive by overwriting the encrypted data up to seven times, offering an unprecedented level of assurance. A convenient **End-of-Lease feature** overwrites all data, including the Document Filing area, user data, job status data and address book.



Network Scanning Access Control

To help protect your network from unauthorized e-mail communications, the MX-6240N/7040N supports **User Authentication**, requiring users to login before performing any network scanning operations.



Control Device Access Over the Network

To help restrict access to the device over the network, the MX-6240N/7040N offers IPsec, SMB and extended support for **SSL Encryption** (Secure Sockets Layer), **IP/MAC** address filtering, IEEE 802.1x authentication, protocol enable/disable and port management for maximum security.



Documents Remain Confidential

The MX-6240N/7040N offers **Confidential Printing**, which when used, requires users to enter a PIN code in order to print a queued document. To help protect your direct-print documents from unauthorized viewing, the MX-6240N/7040N offers encrypted PDF printing and scanning. Additionally, **Secure Fax Release** ensures received fax documents are held in memory until an authorized user enters a PIN code, so that compliance with healthcare regulations such as HIPAA is easier.



Tracking and Auditing Information

Legislation and industry policies require companies to be more aware of information flow from their offices. Sharp offers both built-in and additional hardware/software which allows users to **control, access and track usage** of each device on the network.



Data Security Kit (Optional)

For maximum protection, the optional data security kit offers additional features, such as **Data Overwrite on-demand** and at power up, Document Filing access control, **Incorrect Password Lockout** and Restricted Status Display and Restricted List printing.

These scalable security offerings aim to protect your intellectual property, preserve confidential information and help your business to meet regulatory requirements, such as the Health Insurance Portability and Accountability Act (HIPAA) and the Gramm-Leach-Bliley Act (GLB). For additional information visit: www.sharppusa.com/security.



COMMITTED TO HELPING PROTECT THE ENVIRONMENT

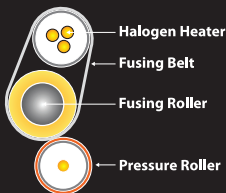


Advanced Energy Saving Features

The MX-6240N/7040N utilizes several energy efficient technologies to minimize power consumption and maximize energy savings.

- An LED exposure lamp reduces power significantly when compared to conventional exposure lamps.
- A customizable seven-day power management scheduler allows businesses to define the days and times when power will be turned on and turned off.
- Sharp's Auto Power Management function allows the device to be set to shut off automatically based on usage trends.
- Sharp's Eco-Scan mode can shut off the fuser when scanning documents, previewing images, faxing and other operations.

State-of-the-art belt fusing system consumes less power and shortens warm up time.



Sharp's Environmental Initiatives and dedication to developing energy efficient document systems set a high standard for the industry.

An Environmentally Responsible Approach to Product Design

The MX-6240N/7040N High-Speed Color Document Systems utilize Sharp's advanced **micro-fine toner technology**, which offers a lower consumption rate and produces less waste than conventional toners, resulting in longer replacement intervals. Sharp supplies are packaged using fully **recyclable materials**. Long-life consumable parts help minimize service intervals and down time, resulting in lower operating costs. With two different energy saving modes, power can be reduced or shut off at set intervals. All Sharp document systems are **ENERGY STAR® certified** and **RoHS compliant** to restrict the use of hazardous substances.

Toner Recycling Program

As part of our commitment to helping preserve the environment, Sharp offers our customers zero waste land fill recycling for all Sharp consumables, including cartridges, bottles, toner collection containers and drum units. Sharp encourages customers to recycle their used Sharp toner cartridges in bulk by providing a pre-paid Recycling Kit for their return to our facility.

Environmental Leadership

As a testament to our commitment to the environment, Sharp is a three-time winner of the **ENERGY STAR®** annual **Excellence in Energy Proficiency Product Design**. Sharp is also a four-time winner of the **SmartWaysm Excellence Award**, which recognizes companies for conserving energy and lowering greenhouse gas emissions in logistics and transportation. Sharp was also a previous recipient of the **Excellence in Partnership Green Contractor Award** and the **Evergreen Award** from the General Services Administration (GSA) and the Coalition for Government Procurement. These awards recognize environmentally responsible businesses and their efforts on recycling, waste reduction and affirmative procurement practices.

Global Initiatives

Sharp is committed to environmental sustainability and corporate responsibility including planning, design, manufacturing, distribution and product end-of-life management. For more information about Sharp's environmental leadership including information about energy efficient products, electronics or toner cartridge recycling, please visit www.sharppusa.com/environment.

MX-6240N/7040N SPECIFICATIONS

Main Specifications					
MX-6240N/ MX-7040N	Base models include LCD, 150-sheet DSPF, 3000-sheet paper capacity (two tandem 2000-sheet trays/two 500 sheet trays), 1-TB hard disk drive, PCL6/Adobe® PostScript® 3™ network printing, color network scanning, web browser, retractable keyboard and MX-AMX2 application communication module				
Type	Console, color multi-function digital document system				
Display	10.1 (diagonally measured) color dot matrix high-resolution touch panel tilting display. 1024 x 600 dots (W-SVGA)				
Functions	Copy, print, network print, network scan, document filing and fax¹				
Copy System	Dry electrostatic transfer/Dual component developer/Magnetic brush development/OPC drums/Belt type fusing/White LED exposure				
Originals	Sheets and bound documents				
Max Original Size	11" x 17"				
Copy Size	Min. 5½" x 8½", Max. 11" x 17" + 12" x 18"				
Copy Speed	62/70 ppm B&W/Color (8½" x 11")				
Multiple Copy	Max. 9999 copies				
First Copy Time (in Seconds)²		MX-6240N	MX-7040N		
		B&W	Color	B&W	Color
	Platen Glass	4.0	5.6	3.7	5.1
	DSPF	6.5	9.2	6.3	8.8
Warm Up Time	55 seconds or less²				
Magnification	25% to 400% in 1% increments (with document feeder 25%-200%)				
Original Feed	150-sheet DSPF				
Scan Speed	DSPF Scan: Up to 150 IPM² (Monochrome); Up to 150 IPM² (Color)				
Original Sizes	5½ x 8½", 8½" x 11", 8½" x 11" R, 8½" x 14", 11" x 17"				
Paper Capacity	Std. 3000 Sheets/Max. 8500 Sheets				
Paper Feed	Standard: Tandem Tray 1 - 1200 sheets (letter size), Tandem				
Sizes	Tray 2 - 800 sheets (letter size), Trays 3/4 - 500 sheets ea. (letter/legal/ledger/statement/12" x 18"), Optional: Multi-bypass Tray (for machine) - 100 sheets (letter/legal/ ledger/statement/monarch or COM10 envelopes/12" x 18"), Multi-bypass (for LCT) - 500 sheets (letter/legal/ ledger/statement/12" x 18"), LCT (2-Drawer) - 2500-sheets each drawer (letter/legal/ledger/12" x 18"), Letter LCC - 3500 sheets (letter), Ledger LCC: 3000 sheets (letter/legal/ ledger).				
Paper Weights and Types	Tandem Trays - 16-28 lb. bond, Trays 3/4 - 16 lb. bond to 100 lb. Bristol, Multi-bypass Tray (for machine) - 15 lb. bond to 110 lb. cover, Multi-bypass Tray (for LCT) - 15 lb. bond to 100 lb. Bristol, LCT (2-drawer) - 15 lb. bond to 110 lb. cover, Letter LCC/Ledger LCC - 16 lb. bond to 100 Bristol. Supported paper types include thin, plain, recycled, color, letter head, pre-printed and pre-punched, embossed and glossy.				
Duplexing	Standard automatic duplex copying and printing				
CPU	Up to 1.8 GHz Multi-Processor Controller				
Interface	RJ-45 Ethernet (10/100/1000Base-T), USB 2.0 (2 host ports, front and rear), USB 2.0 (1 device port)				
Memory	Standard 5 GB				
Hard Disk Drive	1 TB				
Copy Resolution	Scan: B&W/color: 600 x 600 dpi; Copy: B&W/color: 600 x 600 dpi				
Color Modes	Photo, Full Color Mode, Monochrome (B/W)				
Exposure Control	Modes: Text, Text/Photo, Text/Printed-Photo, Printed-Photo, Photo, Map, Pale-Color . Settings: Auto or 9 step manual				
Halftone	256 gradations/2 levels (monochrome)				
Copy Features	Electronic sort, Auto Color Sensing, Auto Paper Selection, Auto Magnification Selection (AMS), image preview/edit, auto tray switching, rotate copy, reserve copy, tandem copy, book copy, margin shift, edge/center erase, book divide, dual page, cover/insert page, OHP insert, job build, card shot, blank page skip, mirror/ reverse, proof, pamphlet, watermark, custom image, job programs.				
Account Control	Up to 1000 users. Supports user-number authentication (on device), login name/password or login name/password (via LDAP server) for Copy, Print, Scan, Fax and document management.				
Output Tray Capacity	Main output tray (top) 250 sheets (face down)				
Firmware Management	Flash ROM with local (USB), network update capability and firmware update 1 to N with SRDM (Sharp Remote Device Management)				
Configuration Method	Web-based management with user/administrator level login, cloning (1 to N) with SRDM and remote front panel access				
Service/Functions	Remote front panel, remote access to service logs and click counts				
Accessibility Features	Tilt Front Panel, Adjustment of Key Touch-Send and Speed, Document Feeder Free Stop, Job Programs, Remote Front Panel, Universal Grip for Paper Trays, and Disable Screen Timeout				
Environmental Standards	International Energy Star Program Ver. 1.1, Law on Promoting Green Purchasing, European RoHS (Restriction of Hazardous Substances)				
Power Source	AC 208-240 VAC, 60 HZ, 20 Amps				
Power Consumption	Maximum: 2880 W or less				
Weight	MX-6240N/7040N: Approx. 490 lbs.				
Approx. Dimensions	33 1/4" (w) x 33 1/4" (d) x 48" (h)				

Network Printing System (Standard)	
PDL	Standard PCL® 6 compatible Adobe®, PostScript® 3™, optional XPS
Resolution	1200 x 1200 dpi/8-bit processing
Print Speed	62/70 pages per minute (8½" x 11")
Print Drivers	Windows Server® 2003-2008, Windows XP, Windows XP x64, Windows Server 2003-2008 x64, Windows Vista®, Windows Vista® x64, Windows 7, Windows 7 x64, MAC OSX (including 10.4.11, 10.5-10.5.8, 10.6.5-10.6.8, 10.7-10.7.2), all MAC PPD.
Features	Auto configuration, continuous printing, electronic sorting, N-up printing, duplex printing, transparency inserts, margin shift, image rotation, different cover page, poster print, job bypass print, job retention, confidential print, proof print, user authentication, image stamp and watermarks. Additional features: Multiple pamphlet print, network tandem print, carbon copy print mode, different cover page/last page/other page, form overlay, tab paper settings, tab printing, chapter inserts and page Interleave¹
Direct Printing	File Types: TIFF, JPEG, PCL, PRN, TXT, PDF, Encrypted PDF, PostScript and Windows XPS¹ (FTP, Web page, E-mail and USB)
Resident Fonts	80 outline fonts (PCL), 136 fonts (PS)
Interface	RJ-45 Ethernet 10/100/1000 Base-T, USB 2.0
Operating Systems	Windows Server 2003-2008, Windows XP, Windows Vista, Windows 7, MAC OS 9-9.2.2, MAC OSX 10.2.8, 10.3.9, 10.4.11, 10.5-10.5.8, 10.6-10.6.5, Novell® Netware® 3x, 4x, 5x, Sun® OS 4.1x, Solaris® 2x, Unix®, Linux® and Citrix® (Metaframe, Presentation Server 4, 4.5) and Windows Terminal Services.¹
Network Protocols	TCP/IP (IPv4, IPv6, IPSEC) SSL (HTTP, IPP, FTP), SNMPv3, SMTP, POP3, LDAP, 802.1x for Windows and Unix. LPD and LPR for Unix. IPX/SPX® for Novell environments and EtherTalk®, AppleTalk® for Macintosh® environments.¹
Printing Protocols	LPR, IPP, IPPS, PAP, Raw TCP (port 9100), FTP and Novell Pserver/Rprinter
Network Security	IP/MAC address filtering, protocol filtering, port management, user authentication and document administration.¹
Security Standards	IEEE-2600™-2008, DoD (NSTISSP) #11, DoD Directive 8500.2, DoD (DISA)

Network Scanning System (Standard)	
Scan Modes	Standard: Color, monochrome, grayscale
Max. Original Size	11" x 17"
Optical Resolution	600 dpi
Output Modes	600 dpi, 400 dpi, 300 dpi, 200 dpi, 150 dpi, 100 dpi
Image Formats	Monochrome: TIFF, PDF, Encrypted PDF, XPS Color: Grayscale, Color TIFF, JPEG, PDF, Encrypted PDF, XPS Internet Fax: TIFF-FX, RIFF-F, TIFF-S1
Image Compression	Monochrome Scanning: Uncompressed, G3 (MH), G4 (MR/MMR) Color/Grayscale: JPEG (high, middle, low)
Scan Destinations	Internet Fax mode: MH/MMR (option); E-mail, Desktop, FTP, Folder (SMB), USB, Internet fax (option); Super G3 fax (option)
One-touch Dest.	Up to 2000 (combined scan destinations)
Group Destinations	Up to 500
Programs	48 (combined)
Max. Jobs	Up to 100
Network Protocols	TCP/IP and SSL (includes HTTP, SMTP, LDAP, FTP, POP3), SMB, ESMTP and 802.1x.
Network Security Software	E-mail server user authentication for LDAP and Active Directory Sharpdesk® desktop personal document management software (1 user license included)
Sharp OSA Platform	Application Communication Module (MX-AMX2) standard

 inserter (MX-CF11 Option)	
Type	Standing, 2 Trays
Paper Capacity	Upper Tray: 200 Sheets; Lower Tray: 200 Sheets (20 lb. bond)
Paper Weight	16 lb. bond to 100 lb. Bristol (Paper feeding)
Paper Size	Up to 12" x 18"
Power Consumption	70 W or Less
Power Source	24 Volts (Supplied by Main Unit)
Dimensions	21 1/2" (w) x 30" (d) x 50 1/2" (h)
Weight	Approx. 51 lbs.

Multi-Folding Unit (MX-FD10 Option)	
Type	Floor Standing
Dimensions	13 1/2" (w) x 30 1/2" (d) x 41 1/2" (h)
Weight	Approx. 146 lbs.
Power Source	Powered by MX-FN21/FN22 Finisher
Power Consumption	Maximum: Standby: 23 W or less; In Operation: 150 W or less
Folding Mode	Z-fold, 3-fold inside* 3-fold outside, 4-fold, 2-fold

4K 100-Sheet Stapler/Finisher (MX-FN21: option)	
Type	4000-sheet console stapler finisher (100-sheet stapling)
Output Trays	Upper tray: Moving offset tray (up to 1500 letter size sheets) Middle tray: 250 sheets (letter size, non-stapled) Lower tray: Moving offset tray (up to 2450 letter size sheets)
Stapling Capacity	Up to 100 sheets (letter/statement)
Stapling Media	Plain paper, letter/legal/ledger size or mixed
Stapling Positions	1 front, 1 rear, or 2 point stitching
Hole Punching	Optional three-hole punch unit MX-PN13B
Power Source	120 VAC, 60 Hz, 15 Amps
Power Consumption	220w/350w with MX-MF10
Weight	Approx.: 134.5 lbs.
Dimensions	Approx.: 30 3/4" (w) x 30" (d) x 41" (h) (with tray extended)

4K 100-Sheet Stapler/Saddle Stitch Finisher (MX-FN22: option)	
Type	4000-sheet console stapler finisher (100-sheet stapling)
Output Trays	Upper tray: Moving offset tray (up to 1500 letter size sheets) Middle tray: 250 sheets (letter size, non-stapled) Lower tray: Moving offset tray (up to 2450 letter size sheets)
Stapling Capacity	Up to 100 sheets (letter/statement)
Stapling Media	Plain paper, letter/legal/ledger size or mixed
Stapling Positions	1 front, 1 rear, or 2 point stitching
Saddle Stitch	Center stitch/center fold (2 staples) letter/legal/ledger paper sizes
Saddle Stitch	Up to 5 sets (16-20 sheets)/10 sets (11-15 sheets per set)/15 sets (6-10 sheets per set)/25 sets (1-5 sheets per set)
Max. Sets	(6-10 sheets per set)/25 sets (1-5 sheets per set)
Hole Punching	Optional three-hole punch unit MX-PN13B
Power Source	120 VAC, 60 Hz, 15 Amps
Power Consumption	220w/350w with MX-MF10
Weight	Approx.: 134.5 lbs.
Dimensions	Approx.: 30 3/4" (w) x 30" (d) x 41" (h) (with tray extended)

Optional Equipment	
MX-LC12	3500-sheet Large Capacity Cassette (letter)¹
MX-LC13	5000-sheet Large Capacity 2-Drawer Air Feed Tray (ledger)¹
MX-LCX3N	3000-sheet Large Capacity Cassette (ledger)¹
MX-MF10	100-sheet Multi-bypass Tray (for machine)
MX-MF11	500-sheet Multi-bypass Tray (for MX-LC13)
MX-FN19	4K Stacking 50-Sheet Staple Finisher¹
MX-FN20	4K Stacking 50-Sheet Staple/Saddle Stitch Finisher¹
MX-FN21	4K Stacking 100-Sheet Staple Finisher¹
MX-FN22	4K Stacking 100-Sheet Staple/Saddle Stitch Finisher¹
MX-CF11	2-Tray Inserter Unit¹
MX-FD10	Multi-folding Unit¹
MX-RB12	Paper Pass Unit (for machine)
MX-RB13	Relay Unit¹
MX-RB14	Paper Pass Unit (for MX-LC13)
MX-RB15	Curl Correction Unit¹
MX-TM10	Trimmer Unit¹
MX-PN12B	3-Hole Punch Unit (for MX-FN19/FN20)
MX-PN13B	3-Hole Punch Unit (for MX-FN21/FN22)
AR-SC2	Staple Cartridge (for MX-FN19/FN20)
AR-SC3	Staple Cartridge (for MX-FN20)
MX-SCX1	Staple Cartridge (for MX-FN22)
MX-SCX2	Staple Cartridge (for MX-FN21/FN22)
MX-TR14	Right Side Exit Tray
MX-TU14	Center Exit Tray
AR-SU1	Stamp Unit (requires AR-SV1 Stamp Cartridge)
AR-SV1	Stamp Cartridge (required for AR-SU1)
MX-PF10	Bar Code Font Kit
MX-PUX1	XPS Expansion Kit
MX-EB11	Enhanced Compression Kit
MX-FX11	Fax Expansion Kit
MX-FWX1	Internet Fax Expansion Kit
MX-EB15	HDD Mirroring Expansion Kit
MX-EC50	CAC Reader (requires Data Security Kit)
MX-FR36U	Commercial Data Security Kit (not available at time of launch)
MX-AMX1	Application Integration Module
MX-AMX3	External Accounting Module

Supplies	
MX-62NTBA	Black Toner Cartridge
MX-62NTCA	Cyan Toner Cartridge
MX-62NTMA	Magenta Toner Cartridge
MX-62NTYA	Yellow Toner Cartridge
MX-62NVBA	Black Developer
MX-62NVSA	Cyan/Magenta/Yellow Developer
MX-62NRSA	Drum
MX-700HB	Toner Collection Container

¹ Some features require optional equipment.
² Specification may vary depending on product configuration, machine settings and operating conditions.



SHARP ELECTRONICS CORPORATION
Sharp Plaza, Mahwah, NJ 07495-1163
1-800-BE-SHARP • www.sharpusa.com

Design and specifications subject to change without notice. Sharp, Sharp OSA, Sharpdesk, My Sharp, and all related trademarks are trademarks or registered trademarks of Sharp Corporation and/or its affiliated companies. Windows, Windows NT, Windows Server and Windows Vista are trademarks or registered trademarks of Microsoft Corporation. All other trademarks are the property of their respective owners.

